



EUREKA BUILDING

Tech + Creative Companies Call Us Home

EUREKABUILDING.COM | 1621 ALTON PKWY IRVINE, CA



CAMPUS

Coworking, Creative Office Space + Events

Established in 2014, the Eureka Building is a 3-acre creative office, coworking and event campus in Irvine designed to offer Orange County's startups a community, accelerate innovation and support local entrepreneurship. Located in the heart of the Irvine Business Complex, Eureka is just minutes away from some of OC's most popular centers like The Von Karman Plaza, The District, Diamond Jamboree, The Square and Irvine Concourse. Access to the 5, 405, 55 and 73 highways makes commuting as easy as ever.



COMMUNITY

Tech + Creative Networking

Eureka is home to one of the largest tech and creative communities in SoCal. Our tenants are welcome to engage in events and programming within the community that are regularly hosted in our venue spaces at Eureka Building.

Eureka is home for several local meetups, including: OC Bitcoin Network, Startup Grind OC, Integrous Women, OC Indie Developers, and more.





EUREKA HUB

WE'RE A SHARED OFFICE SPACE FOR CREATIVE AND TECH INNOVATORS. MORE THAN A COWORKING SPACE, WE'RE A COMMUNITY.



Coworking **MEMBERSHIPS**

Eureka Hub offers different types of flexible memberships to suit your needs. We offer great perks so that all you have to worry about is coming in and getting work done.



These private offices are for getting some serious work done. Located within the Hub, and great for small teams, an Office Pod serves between 2 and 20 people who need space to join forces and collaborate.

Office **PODS**

Eureka HUB Availability

Office Pod 7 + 9 + 10

marked in orange

9 Dedicated Desks

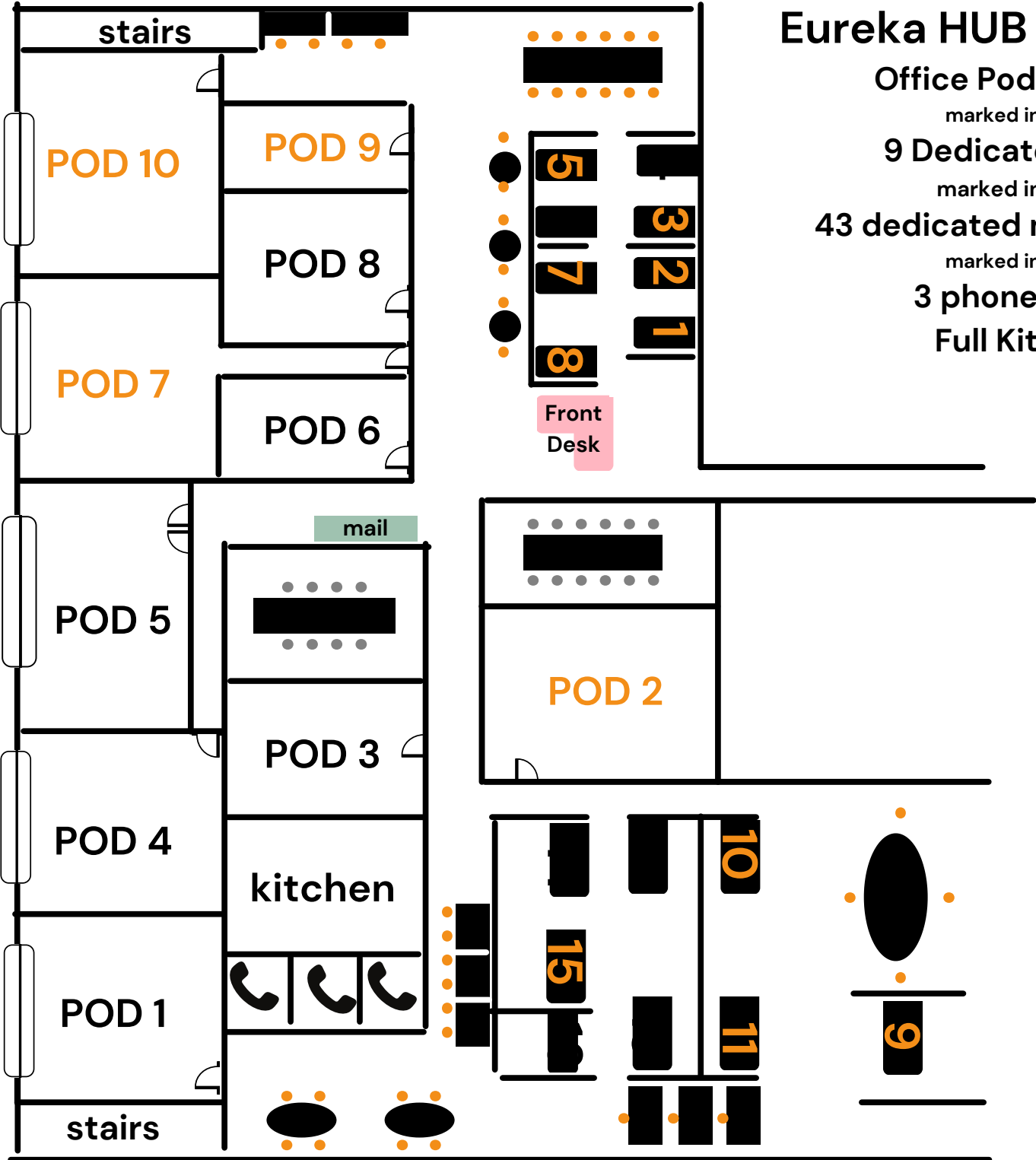
marked in orange

43 dedicated memberships

marked in orange

3 phone rooms

Full Kitchen



DEDICATED DESK



ABOUT THE SPACE

\$499/month | 24/7 Access

Along with the permanence and stability of an assigned private desk, Dedicated Members also get overhead storage and a filing cabinet.

Amenities Included: WiFi, 20 hours/month conference room usage, mailing services, kitchen + lounge access, printer access

GENERAL MEMBERSHIP



ABOUT THE SPACE

\$299/month | 24/7 Access

Choose any available general desk in the Hub, plug in and get down to business. These desks are claimed on a first come, first served basis.

Amenities Included: WiFi, 10 hours/month conference room usage, mailing services, kitchen + lounge access, printer access

PRIVATE OFFICE #7

COMFORTABLE FOR TEAM OF 4 - 10 • APPROX. 600 SQFT

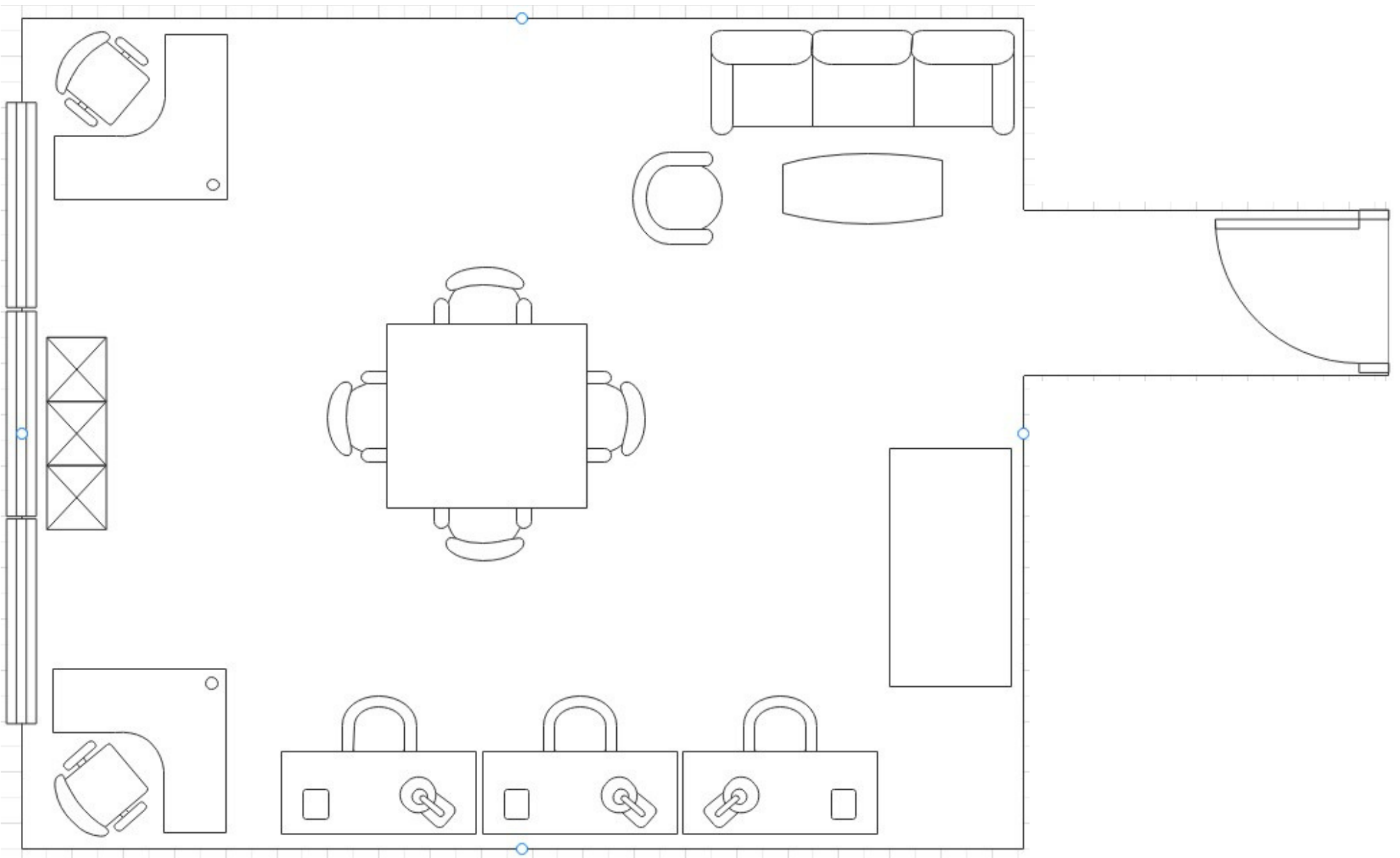


ABOUT THE SPACE

Located on the second floor in the Eureka Hub, Private Office #8 is great for small teams. This private office has a view overlooking the newly renovated and expanded Eureka HUB.
irvine@eurekahub.com • 949.439.7677

KEY FEATURES

- Wifi
- 24/7 access
- Ample parking
- 20 hours/month conference room usage
- Mailing services
- Free entry to Eureka community events
- Kitchen + lounge access



Office Pod 7 Floorplan - Approx. 600 SqFt



PRIVATE OFFICE #9

COMFORTABLE FOR TEAM OF 1 - 3 • APPROX 300 SQFT



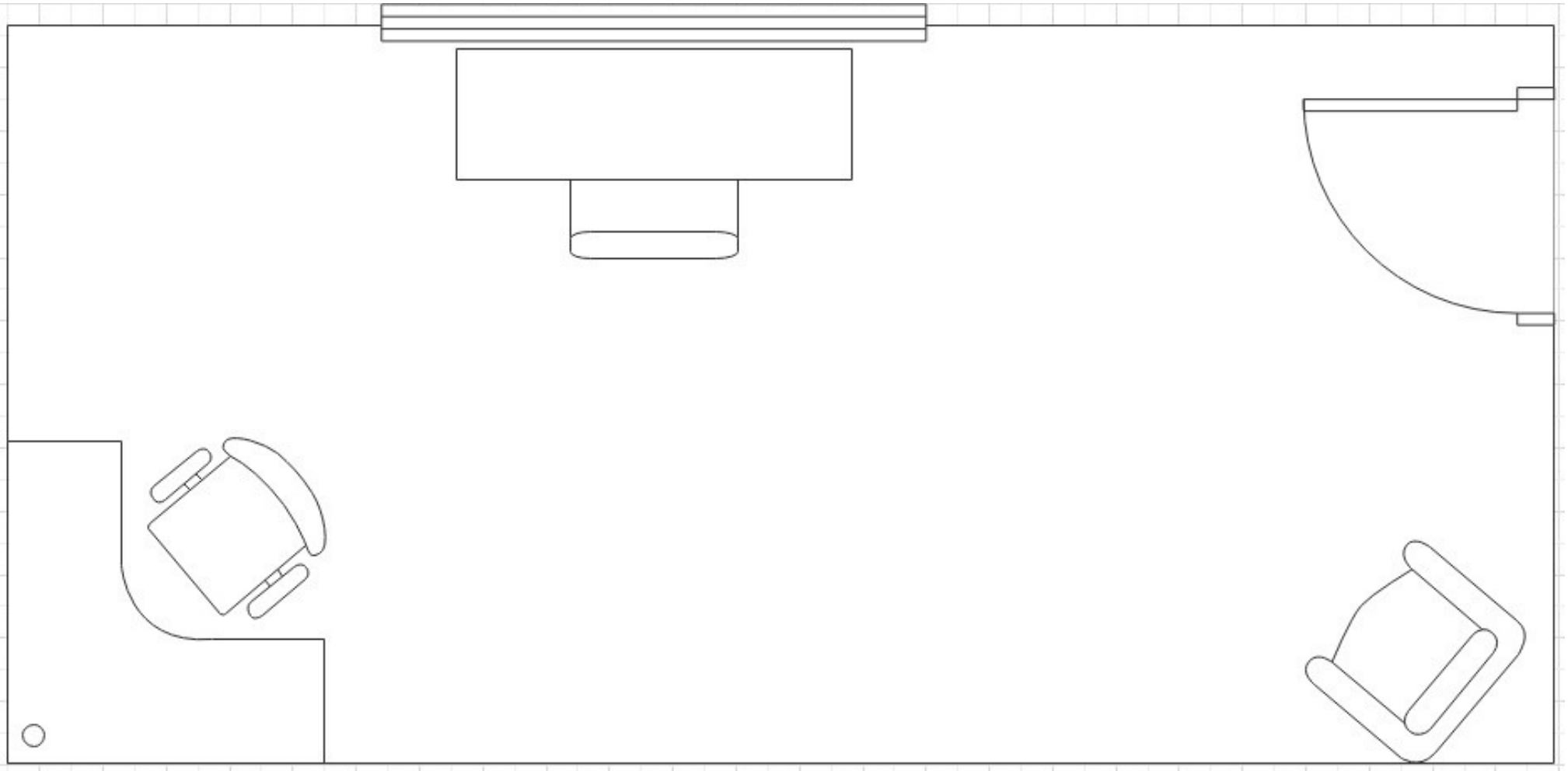
ABOUT THE SPACE

Located on the second floor in the Eureka Hub, Private Office #9 is great for small teams. This private office has a view overlooking the newly renovated and expanded Eureka HUB.

irvine@eurekahub.com • 949.439.7677

KEY FEATURES

- Wifi
- 24/7 access
- Ample parking
- 20 hours/month conference room usage
- Mailing services
- Free entry to Eureka community events
- Kitchen + lounge access



Office Pod 9 Floorplan – Approx. 300 SqFt



PRIVATE OFFICE #6

COMFORTABLE FOR TEAM OF 1 - 3 • APPROX 300 SQFT

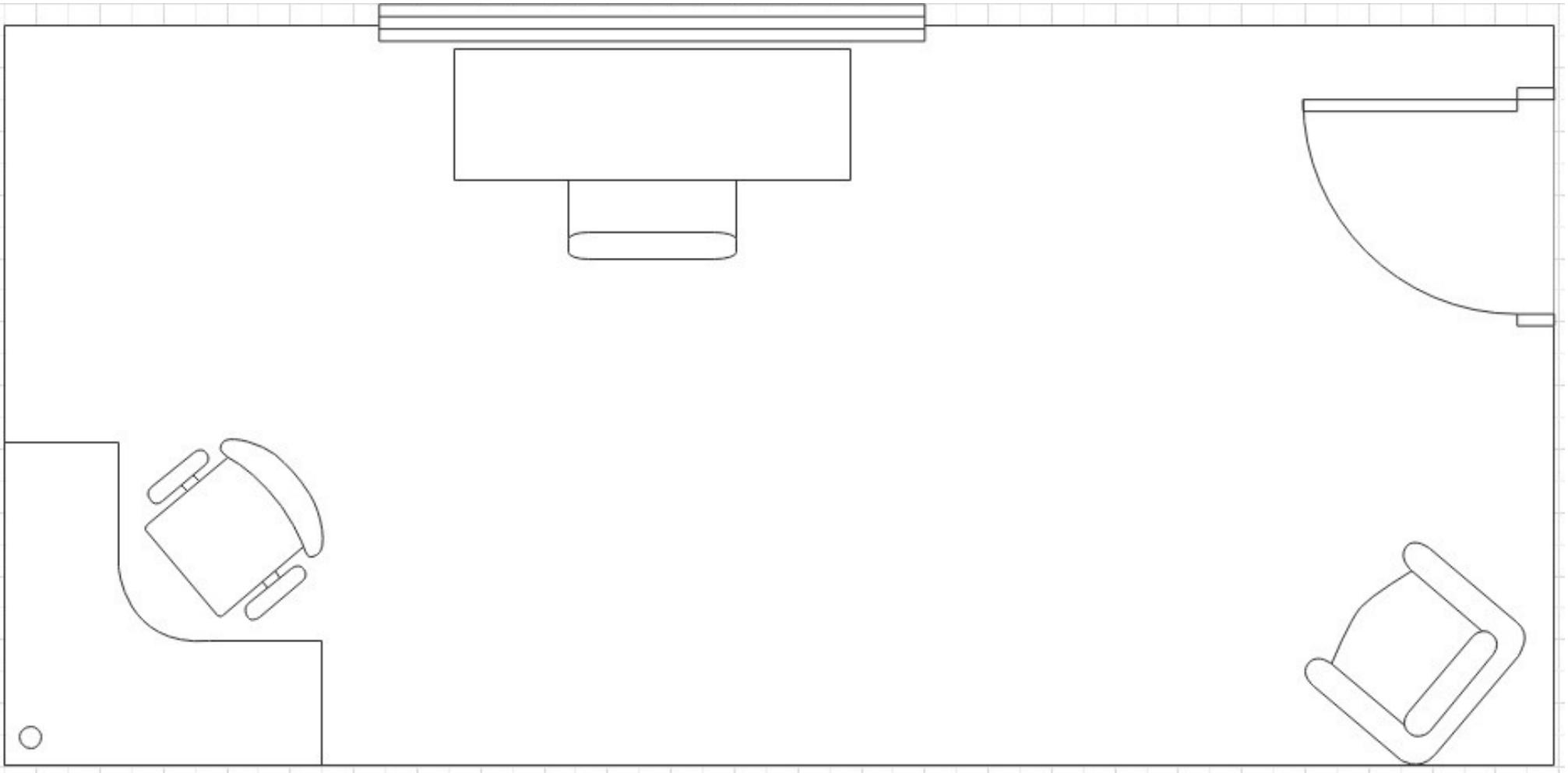


ABOUT THE SPACE

Located on the second floor in the Eureka Hub, Private Office #9 is great for small teams. This private office has a view overlooking the newly renovated and expanded Eureka HUB.
irvine@eurekahub.com • 949.439.7677

KEY FEATURES

- Wifi
- 24/7 access
- Ample parking
- 20 hours/month conference room usage
- Mailing services
- Free entry to Eureka community events
- Kitchen + lounge access



Office Pod 6 Floorplan – Approx. 300 SqFt

PRIVATE OFFICE #10

COMFORTABLE FOR TEAM OF 4 - 12 • APPROX 635 SQFT

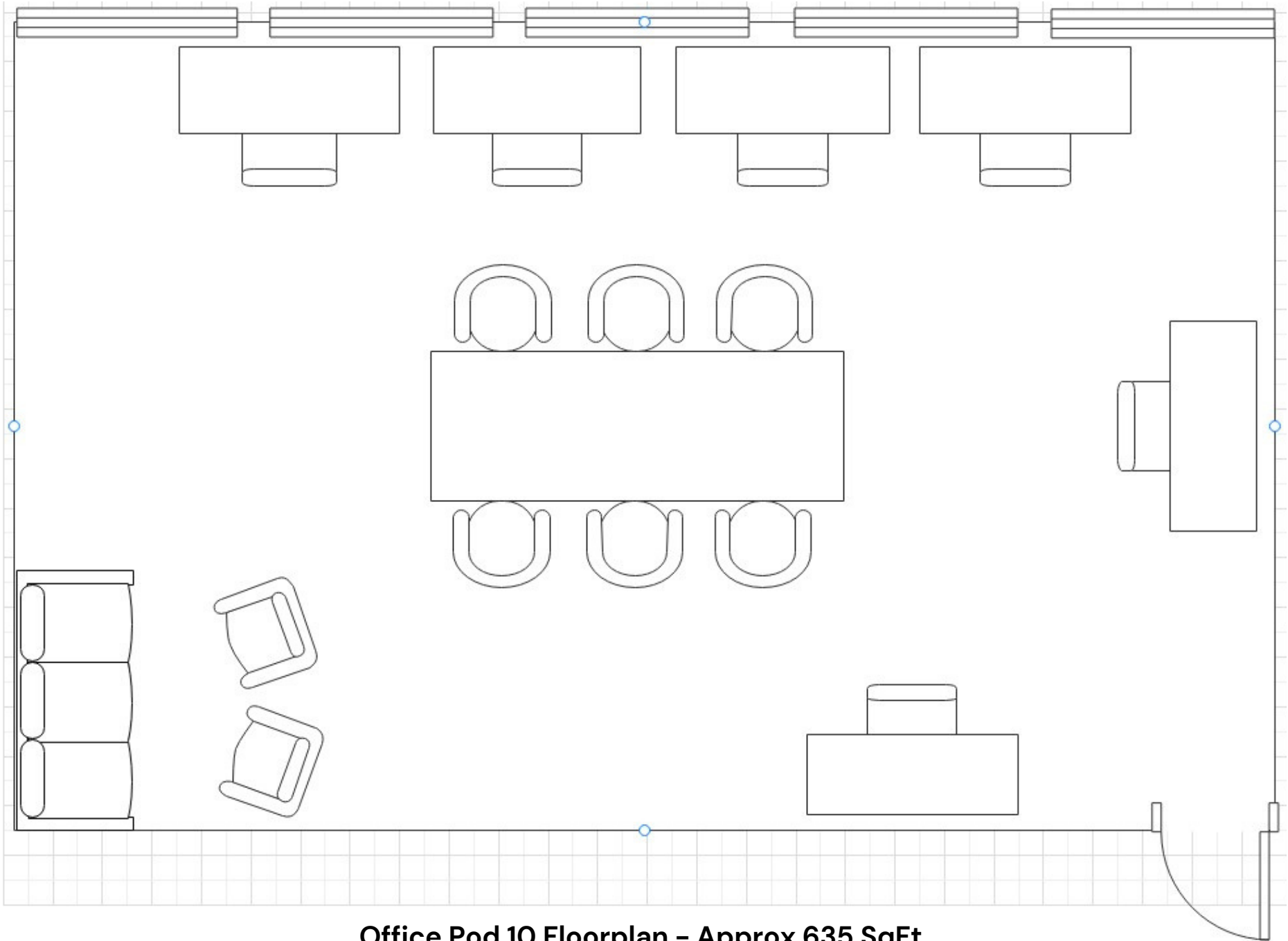


ABOUT THE SPACE

Located on the second floor in the Eureka Hub, Private Office #10 is a quiet corner office with a view that wows. This private office has an entire wall of windows that bring in great natural light and look onto Eureka's beautiful Park. irvine@eurekahub.com • 949.439.7677

KEY FEATURES

- Wifi
- 24/7 access
- Ample parking
- 20 hours/month conference room usage
- Mailing services
- Free entry to Eureka community events
- Kitchen + lounge access



Office Pod 10 Floorplan - Approx 635 SqFt.





AMENITIES

Eureka Hub Irvine

949.439.7677 | Tania@eurekahub.com

We're so happy that you're considering Eureka Hub as your coworking space!

Here are a few amenities we offer to our members:



WiFi



Meeting +
Phone Rooms



Coffee + Tea



Kitchen +
Lounge Access



Community
Manager



Mail + Package
Handling



24/7 Access



Built-In Community



Events +
Networking



Office
Cleaning



Color Printing +
Scanning



Use of Business
Address



Pet Friendly

We can't wait to have you at Eureka HUB!

irvine@eurekahub.com | 949.439.7677



[Facebook.com/eurekaoc](https://www.facebook.com/eurekaoc)



[@EurekaHub](https://www.instagram.com/EurekaHub)



www.EurekaBuilding.com

SUITE 250 AVAILABLE

STARTS AT \$3.00/SQFT • 12,009SQFT



ABOUT THE SPACE

Located on the second floor in the Eureka Building, Suite 250 is an open-concept corner suite with large windows multiple private offices + corporate kitchen and lounge.

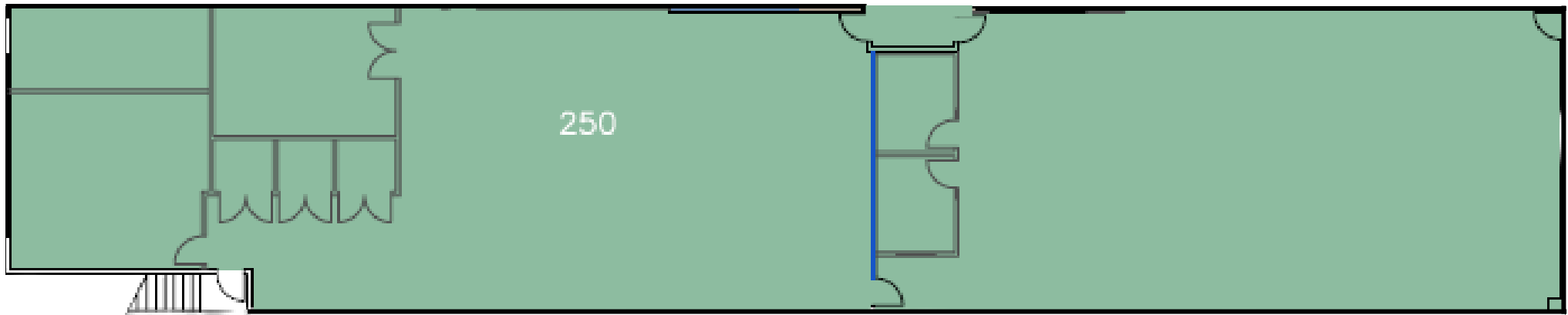
irvine@euerkahub.com • 949.439.7677

KEY FEATURES

- 10 Private offices
- 2 Conference rooms
- Move-in ready
- Corporate kitchen
- Concrete floors
- Partitioned offices + open floorplan
- Abundance of natural light
- Wired for multi-media

SUITE 250 FLOOR PLAN

\$3.00/SQFT • APPROX 10,000 SQFT



SUITE 240 AVAILABLE FOR LEASE

\$3.00/SQFT • APPROX 3,519 SQFT



ABOUT THE SPACE

Located on the second floor in the Eureka Building, Suite 240 is a corner suite with partitioned offices and two private offices. This office comes fully furnished.

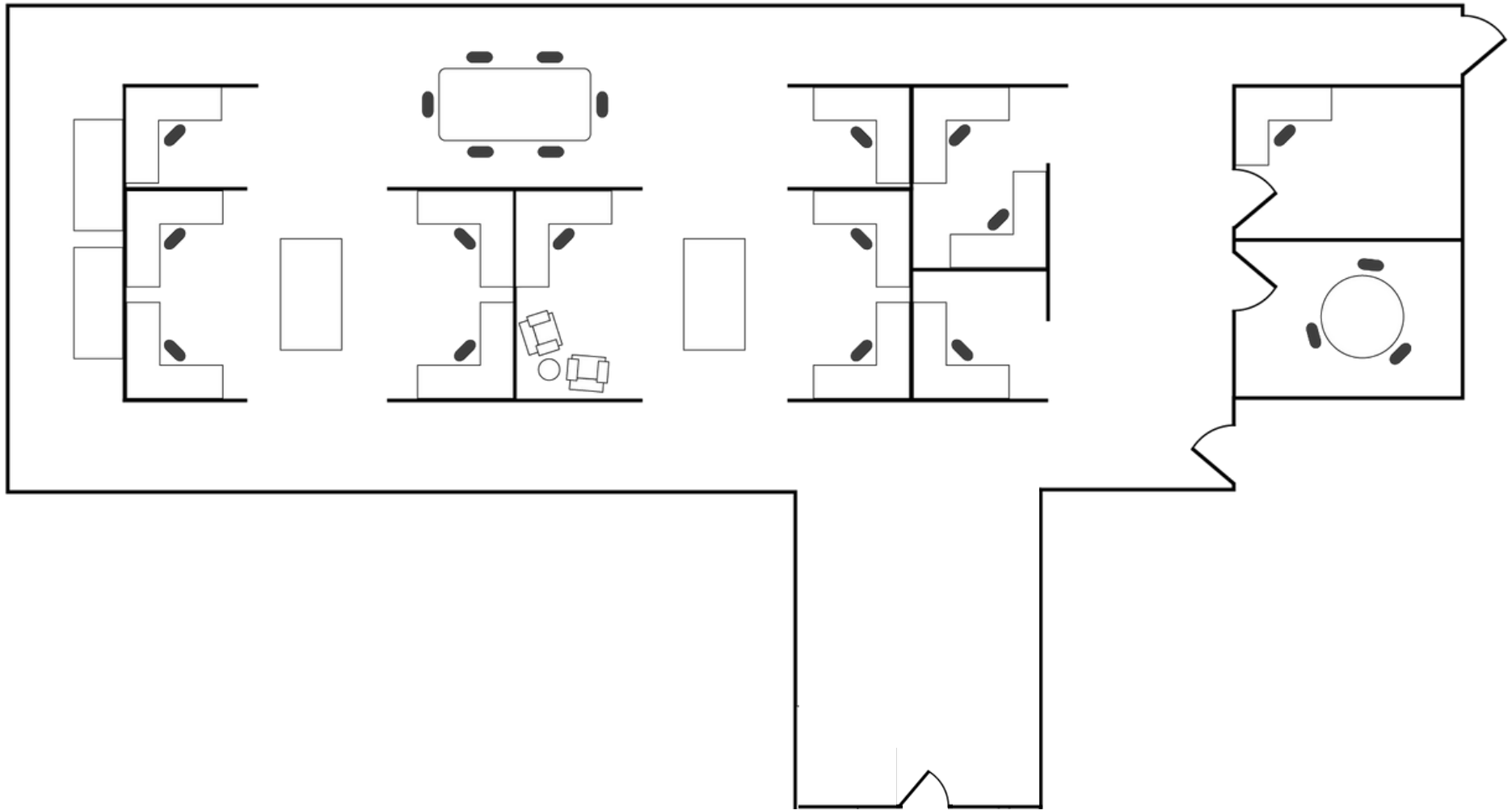
irvine@eurekahub.com • 949.439.7677

KEY FEATURES

- Includes 2 private offices
- Move-in ready
- Furnished
- Glass entryway
- Fully carpeted
- Abundance of natural light
- Partitioned offices
- Corner office space

SUITE 240 FLOOR PLAN

\$3.00/SQFT • APPROX 3,519 SQFT



CONTACT

1621 ALTON PARKWAY • IRVINE, CA 92606



irvine@eurekahub.com

949.439.7677